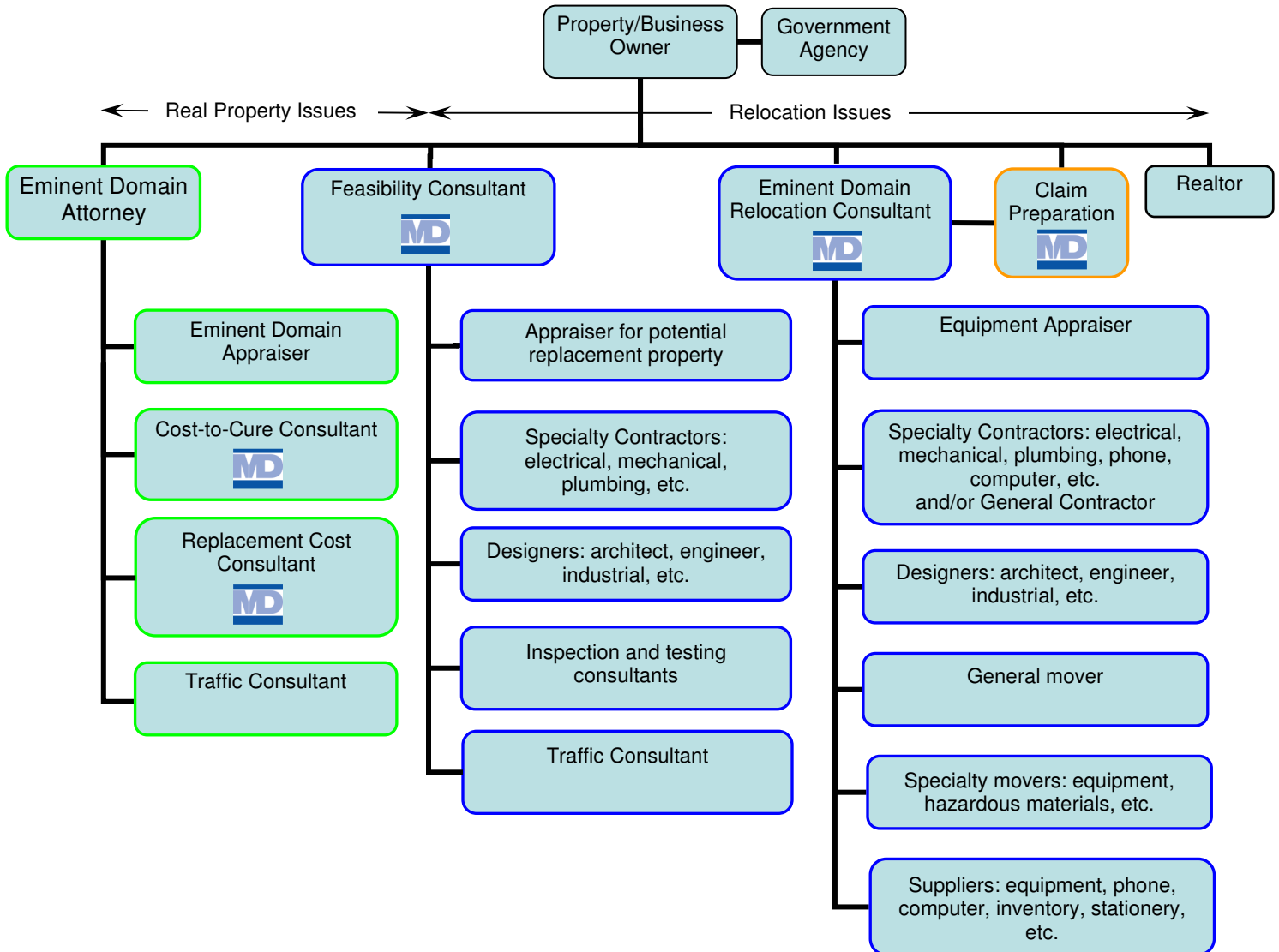


EMINENT DOMAIN TEAM ORGANIZATION CHART

This is a common organization chart for a commercial property being condemned under eminent domain.

Efficiently finding your specific issues created by the taking of your property, the solutions to those issues, and the real costs of those issues, is your team's goal.

The success in proving your actual costs above the public agency's determination is where you realize the return on your investment in your team. Those returns can be from several areas of the process including an improved settlement during negotiations by proving: additional value in your property, additional costs in damages, and additional relocation expenses. In addition, in many cases, when a court awards you over 10% of the public agencies best and final offer, also awarded are your reasonable legal fees and costs.



The color-coded borders on the above task boxes indicate how the owner typically receives payment or reimbursement for the different tasks. The color-coding is explained below. For your convenience, certain task boxes include Martyn's logo indicating where his services are provided.

- Added value to property and/or court award
- Typically paid under relocation reimbursements
- By increased relocation reimbursements
- Not applicable
- MD** Services provided by Martyn Daniel